

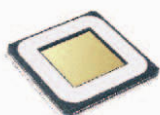


CT 9000 & CT400 time attendance system

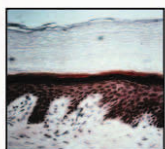
Time Attendance Solutions For All

CASTLE's time and attendance system allows companies to increase profitability by greatly decreasing paycheck errors and preventing employee fraud. With the usage of CASTLE Time Attendance System, it will eliminate 'buddy-punching' and 'ghost' employees, which are the two most common types of employee fraud.

Since 1995, we have been meeting the time recording needs of businesses large and small. We have built up an unequalled range of products and systems at affordable ranges to satisfy the needs of the multi-site corporate clients or the local industries.



InnerScan Sensor Technology



Where InnerScan Sensor captures the fingerprint image

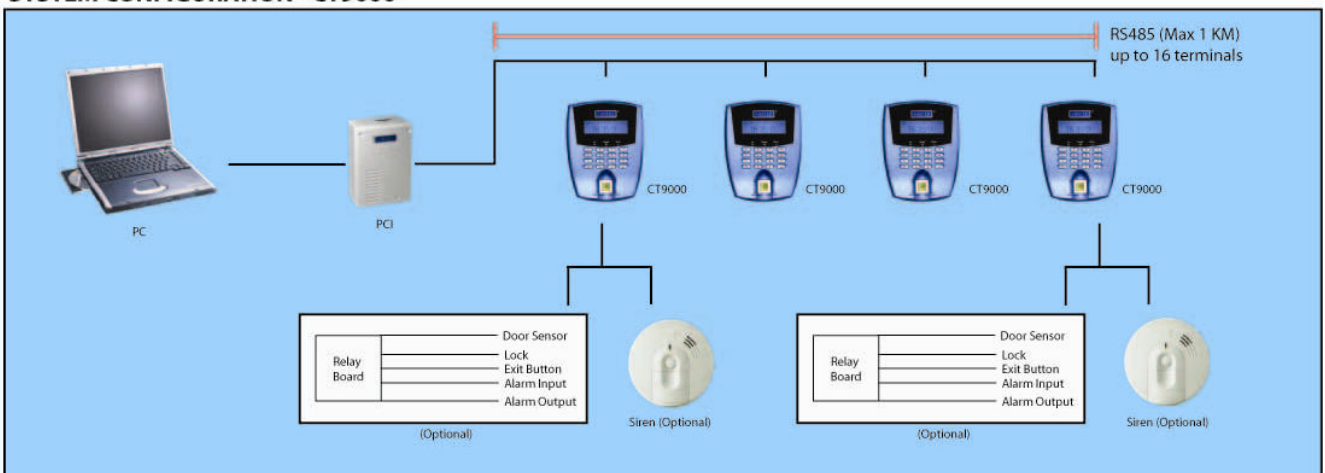


FEATURES

CT9000

- Power consumption: 12Vdc, 1A	●
- Maximum connected to 16 unit devices per PCI	●
- Operation modes:	
1. Card + Finger	●
2. ID + Finger	●
3. Finger only (First 30 templates)	●
4. Card + PIN	●
5. Card only	●
6. Pin Access (2 sets of 4 digit PINs) (Optional for door access only)	●
7. PIN only	●
- Single userID to 2 templates	●
- 1 Alarm input & output (Optional for door access only)	●
- Reader locking features	●
- 3 LED indicators (Valid, Ready, Error)	●
- 16 Keys silicon rubber keypad	●
- Animated graphical icon	●
- Blue screen LCD	●
- Built-in Real Time Clock (RTC), screen saver mode for real time display	●
- Built-in proximity reader (Magnetic Mifare signal)	●
- Built-in tamper switch to prevent vandalism	●
- 800 card users/templates, Unlimited card storage, depends on PC memory	●
- Unlimited card users	●
- 10 digits user definable login password protection	●
- Up to 15KV Electro Static Discharge (ESD) protection	●
- External watch dog for system self-diagnostic	●
- False Acceptance Rate (FAR): 0.0001; False Rejection Rate (FRR): 0.027	●
- Easy-to-Place-Finger sensor allocation	●
- Colors: Black and Dolphin-Blue	●
- Dimension: 143W x 112H x 44D (mm)	●
- 29700 transactions log storage, expandable to 30,000	●
- Memory low indication from both reader and Castle software	●
- Remote synchronize terminal's time	●
- Equip with siren output (optional for shift start/end acknowledgement purposes)	●
- Online photo	●
- Flexible working shift (Normal shift, Overnight shift and Rotate shift)	●
- Flexible lunch hours	●
- Flexible working hours	●
- Flexible overtime hours and rating calculation	●
- Allow Grace-In settings	●
- Flexible/variance report types	●
- Flexible leave application (Allow Carry Forward, Annual, Maternity, etc.)	●
- Calendar based leave table to ease update and viewer	●
- Allow shift grouping transfer/assignment	●
- Allow records authorization or editing	●
- Bundled with tools for handling pending/non-authenticate transactions	●
- Bundled with UBS export features	●
- Bundled with different types of report export (eg. CSV, TXT, Excel, etc.) for others terminal viewer	●
- Definable software user's menu accessibility (Max: 10 sets)	●
- Equip with Dongle protection (USB or Serial Port)	●
- Manageable branches employee information	●
- Employee statutory update (Active, Resigned, Terminated, Retired, Suspended)	●
- Included Housekeeping, Backup and Restore features	●
- Using Microsoft Access Database (Upgradeable to MS SQL Server based)	●
- Upgradable to multiple clients	●
- OEM/SDK version applicable (Kindly contact your respective sales team for details, terms and conditions apply)	●
- Compatible to 12 shifts data string capture/ clocking (OEM version only)	●
- Max. 18 users definable characters screen display for every individual shift (OEM version only)	●

SYSTEM CONFIGURATION - CT9000

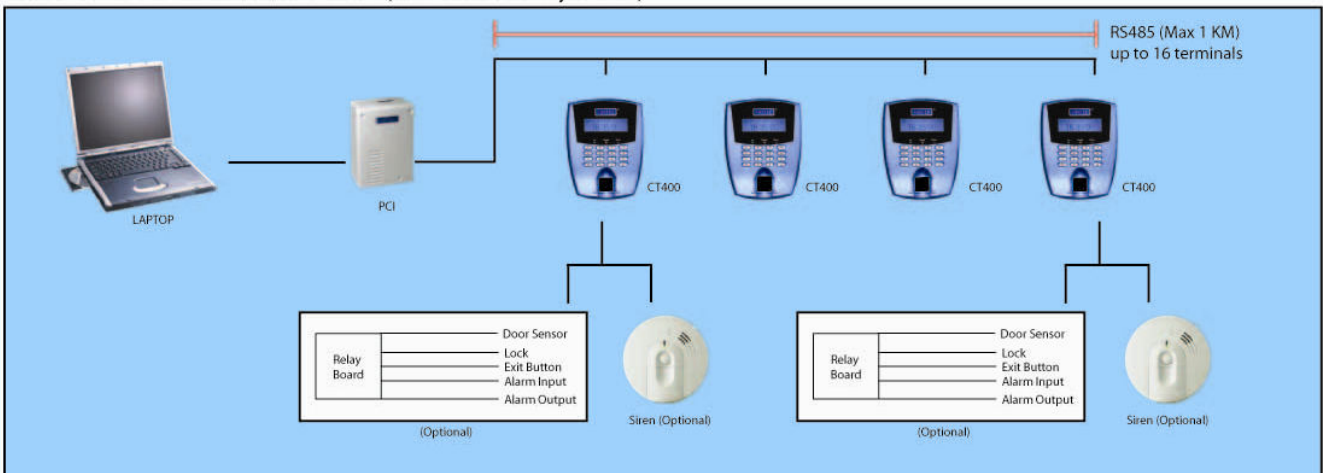


FEATURES

CT400

- Power consumption: 12Vdc, 1A	●
- Maximum connected to 16 unit devices per PCI	●
- Operation modes:	
1. Card + Finger	
2. ID + Finger	
3. Finger only (First 30 templates)	
4. Card + PIN	
5. Card only	●
6. Pin Access (2 sets of 4 digit PINs) (Optional for door access only)	●
7. PIN only	●
- Single userID to 2 templates	●
- 1 Alarm input & output (Optional for door access only)	●
- Reader locking features	●
- 3 LED indicators (Valid, Ready, Error)	●
- 16 Keys silicon rubber keypad	●
- Animated graphical icon	●
- Blue screen LCD	●
- Built-in Real Time Clock (RTC), screen saver mode for real time display	●
- Built-in proximity reader (Magnetic Mifare signal)	●
- Built-in tamper switch to prevent vandalism	●
- 800 card users/templates, Unlimited card storage, depends on PC memory	●
- Unlimited card users	●
- 10 digits user definable login password protection	●
- Up to 15KV Electro Static Discharge (ESD) protection	●
- External watch dog for system self-diagnostic	●
- False Acceptance Rate (FAR): 0.0001; False Rejection Rate (FRR): 0.027	●
- Easy-to-Place-Finger sensor allocation	●
- Colors: Black and Dolphin-Blue	●
- Dimension: 143W x 112H x 44D (mm)	●
- 29700 transactions log storage, expandable to 30,000	●
- Memory low indication from both reader and Castle software	●
- Remote synchronize terminal's time	●
- Equip with siren output (optional for shift start/end acknowledgement purposes)	●
- Online photo	●
- Flexible working shift (Normal shift, Overnight shift and Rotate shift)	●
- Flexible lunch hours	●
- Flexible working hours	●
- Flexible overtime hours and rating calculation	●
- Allow Grace-In settings	●
- Flexible/variance report types	●
- Flexible leave application (Allow Carry Forward, Annual, Maternity, etc.)	●
- Calendar based leave table to ease update and viewer	●
- Allow shift grouping transfer/assignment	●
- Allow records authorization or editing	●
- Bundled with tools for handling pending/non-authenticate transactions	●
- Bundled with UBS export features	●
- Bundled with different types of report export (eg. CSV, TXT, Excel, etc.) for others terminal viewer	●
- Definable software user's menu accessibility (Max: 10 sets)	●
- Equip with Dongle protection (USB or Serial Port)	●
- Manageable branches employee information	●
- Employee statutory update (Active, Resigned, Terminated, Retired, Suspended)	●
- Included Housekeeping, Backup and Restore features	●
- Using Microsoft Access Database (Upgradeable to MS SQL Server based)	●
- Upgradable to multiple clients	●
- OEM/SDK version applicable (Kindly contact your respective sales team for details, terms and conditions apply)	●
- Compatible to 12 shifts data string capture/ clocking (OEM version only)	●
- Max. 18 users definable characters screen display for every individual shift (OEM version only)	●

SYSTEM CONFIGURATION - CT400 (Reader without Saline Layer Scanner)



● The Value of Using Time Attendance System

- **Time is money.** One of the biggest advantages of a time and attendance solution is that it saves time when payroll is prepared. For accountants that provide payroll services, this can boost the volume of business they handle, because less time is needed to process payroll for each client.
- **Getting it right on time.** A key to providing a consistently high level of quality is having the right data. Implementing a time and attendance solution ensures that data are electronically tracked, and helps limit the possibility of error in data entry and classification of employee time. Employers want to be sure employees are paid accurately.
- **Flexibility.** Time and attendance solutions can come as a stand-alone module, bundled together with other services, or implemented and integrated with legacy systems. Many of the available time and attendance solutions can integrate directly with a payroll solution, ensuring that data are exported into the payroll system seamlessly.
- **Changing times.** The technology of a time and attendance solution is easy to implement and can be matched to the needs of the business. Solutions include automated timeclocks, web-based timesheets, and biometrics (e.g., using physical characteristics, such as a 3-D image of a hand, to identify users). Knowledge of the business can lead to solutions that best fit the company's needs.
- **Time to practice what you preach.** Nothing beats firsthand experience and knowledge. Any outside consultant recommending a time and attendance solution should have experience implementing it herself. By using a time and attendance solution, the advisor develops a more complete understanding of the offering's capabilities, and can feel more comfortable recommending it.

ORDERING INFORMATION

STOCK CODE	DESCRIPTION	DIMENSION
CT-9000	Saline Layer Scanner c/w proximity reader, 16 keys silicon rubber keypad, reader interface unit & ABS casing with blue graphic.	114W x 112H x 44D (mm)
CT-400	Proximity reader, 16 keys silicon rubber keypad, reader interface unit & ABS casing with blue graphic.	114W x 112H x 44D (mm)
(Optional Accessories)		
SRB-9000	Door interface unit for single door access.	197W x 293H x 80D (mm)
Platinum Kit	Primary interface.	170W x 231H x 81D (mm)
CR-9000	External alarm relay board.	100W x 137H x 40D (mm)
PCI-CT400	PC interface unit with cable (Serial port - 9 pin female D-Sub).	100W x 137H x 40D (mm)